



UTILIMASTER

SHELVING

Predesigned Layouts

Storage Units

Interior & Exterior Drawers

Shelving

Sprinter Shelving



Trailer



Parcel Delivery Van



Truck Body



Walk-In Van

QUALITY ENGINEERED SHELVING

800-237-7806

Fax: 574-862-7637

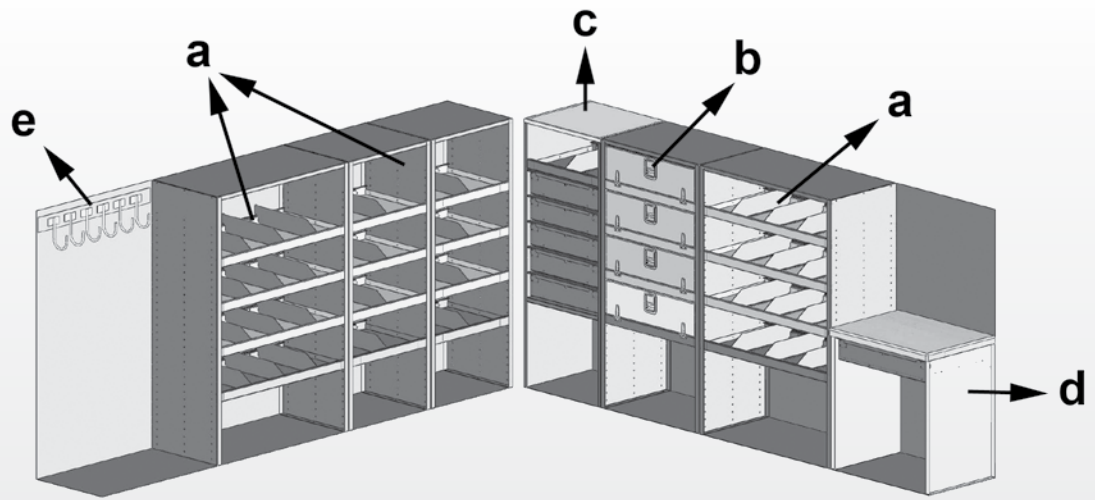
Email: parts@utilimaster.com

Website: www.utilimaster.com

Layouts are designed for use in walk-in vans, truck bodies or trailers. Layouts can be flexibly created to meet cargo area dimensions and maximize convenience.

Interior Layouts

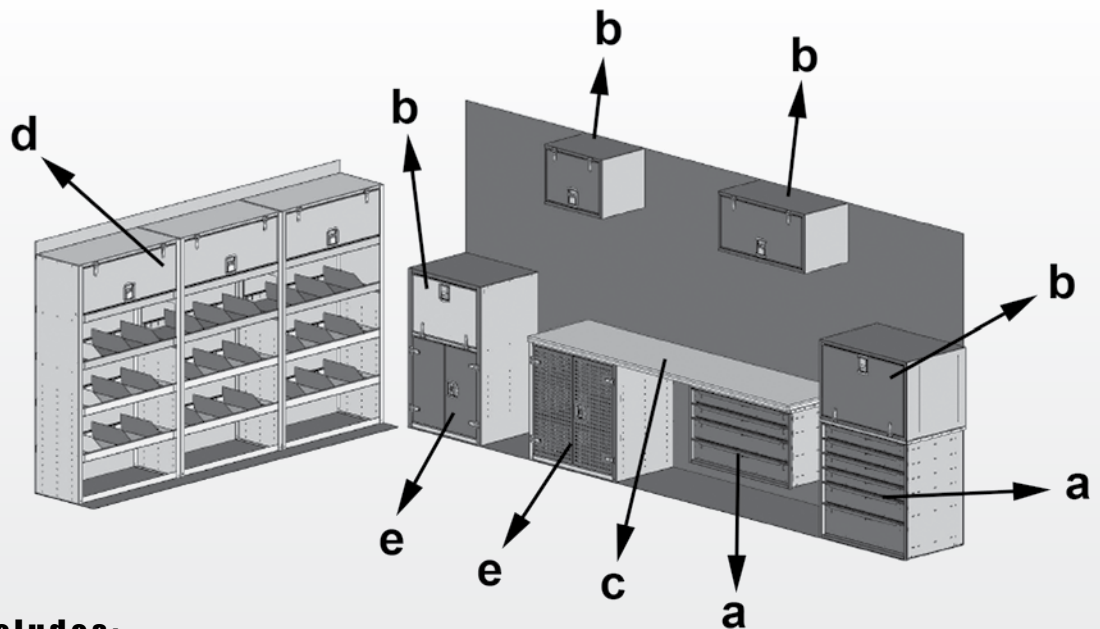
Layout 1



Layout 1 Includes:

- | | | | |
|---|----------------------------|---|----------------------------------|
| a | 4 shelving units | d | 1 hardwood worktable with drawer |
| b | 1 shelving unit with doors | e | 6 J-hooks |
| c | 1 drawer unit | | |

Layout 2



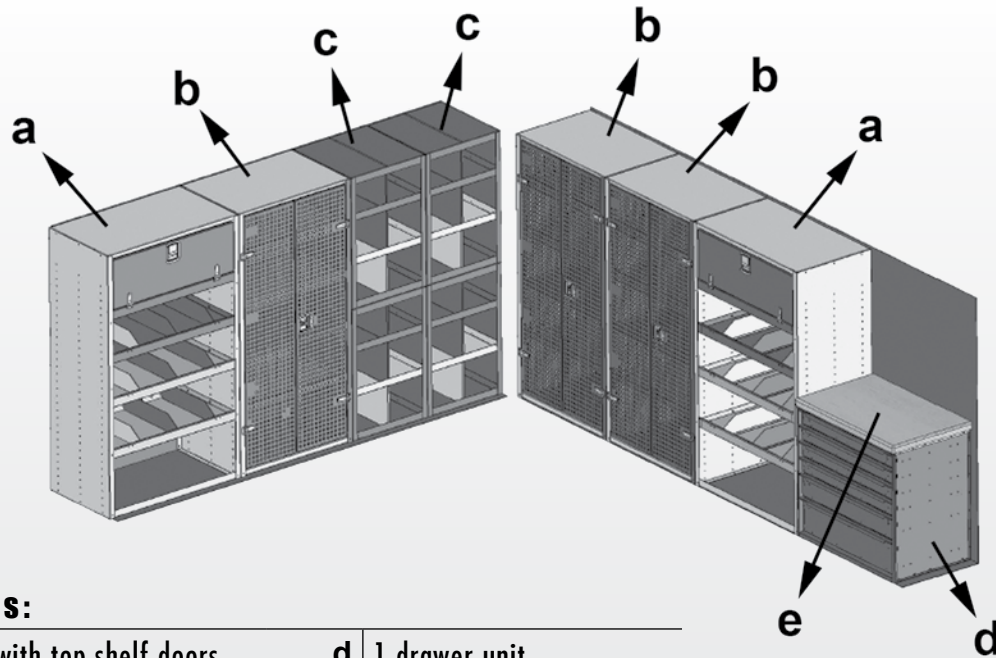
Layout 2 Includes:

- | | | | |
|---|----------------------|---|---------------------------------------|
| a | 2 drawer units | d | 3 shelving units with top shelf doors |
| b | 4 cabinets | e | 2 lockers |
| c | 1 hardwood worktable | | |

Quality parts, by design.

Layouts are designed to maximize space usage while offering optimal tool and material organization. Individual units are interchangeable with the units on the following pages, offering endless layout options to improve work efficiency.

Layout 3

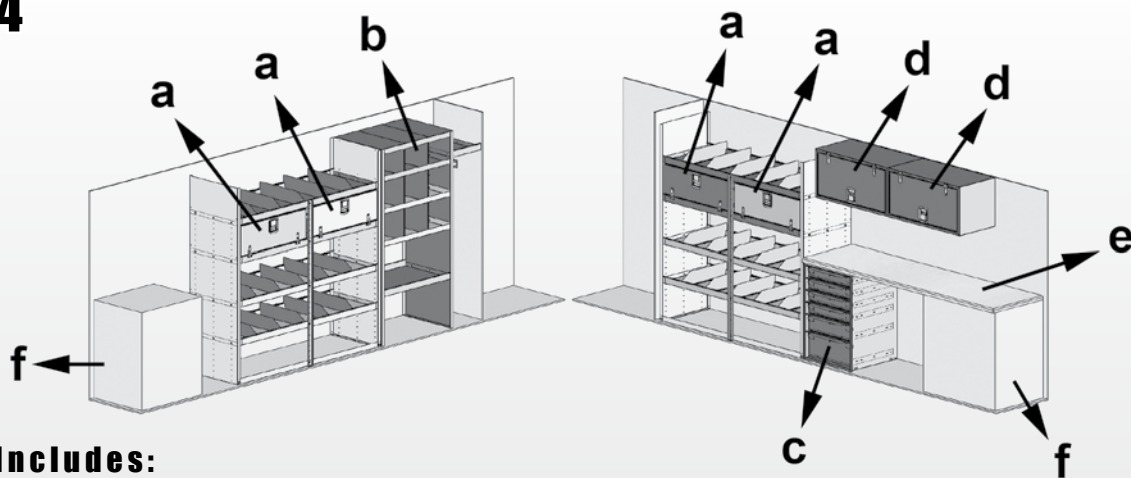


Layout 3 Includes:

- | | | | |
|---|---------------------------------------|---|----------------------|
| a | 2 shelving units with top shelf doors | d | 1 drawer unit |
| b | 3 closet units with perforated doors | e | 1 hardwood worktable |
| c | 2 bin units | | |

Interior Layouts

Layout 4



Layout 3 Includes:

- | | | | |
|---|---------------------------------------|---|-------------------------------------------------------------|
| a | 4 shelving units with top shelf doors | d | 2 chest units |
| b | 1 bin unit | e | 1 hardwood worktable |
| c | 1 drawer unit | f | 2 exterior slide-out generator/
compressor storage units |

Quality parts, by design.

Robust aluminum construction provides exceptional durability from a rust-free, lightweight alternative to steel.

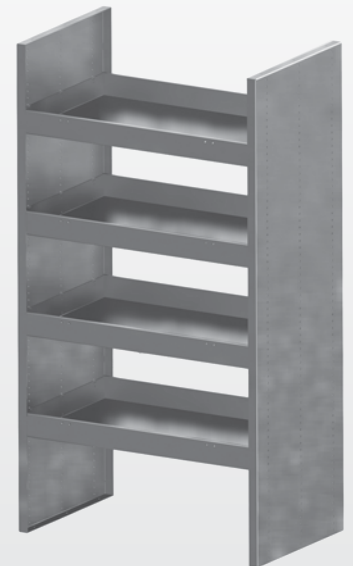
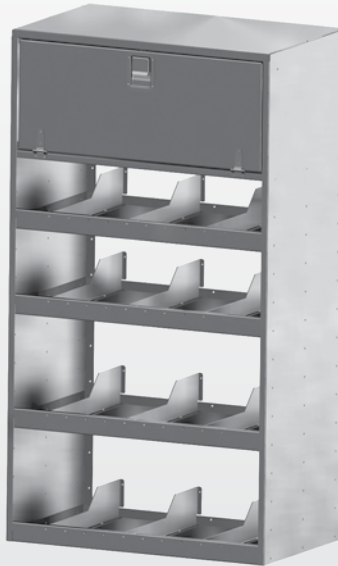
Shelving Units & Closets

Shelving Units

Height	36" or 72"
Width	24", 36", 42" or 48"
Depth	18" or 24"

Options

- Adjustable dividers
- Door on all shelves
- Top shelf door

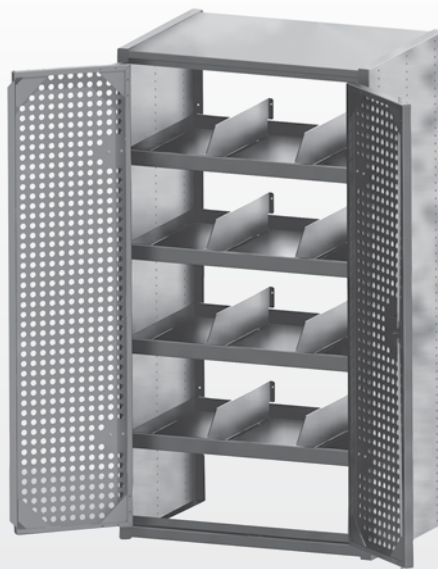


Closet Units

Height	36" or 72"
Width	24" or 36"
Depth	18" or 24"

Options

- Adjustable dividers
- Perforated doors
- Solid doors



Quality parts, by design.



Robust aluminum construction provides exceptional durability from a rust-free, lightweight alternative to steel.

Locker Units

Height	36" or 72"
Width	12" or 18"
Depth	18" or 24"

Features

Paddle latch on 36" models

T-handle on 72" models

Options

Perforated Door



Chest Units

Height	18" or 24"
Width	18", 24" or 36"
Depth	18" or 24"

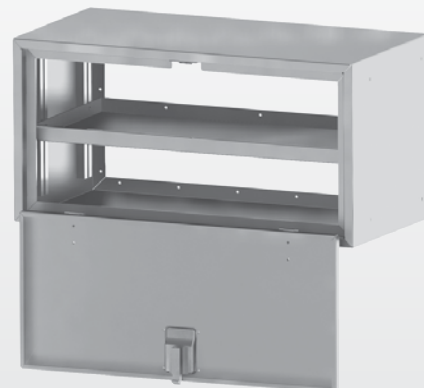
Features

Paddle latch for secure closing

Wall mountable

Options

Adjustable shelf



Lockers & Chests

Quality parts, by design.

Robust aluminum construction provides exceptional durability from a rust-free, lightweight alternative to steel.

Drawers & Bins

Drawer Units

Height	24" with (2) 4" drawers and (2) 6" drawers 36" with (4) 4" drawers, (1) 6" drawer and (1) 9" drawer
Width	24", 36", 42" or 48"
Depth	18" or 24"

Features

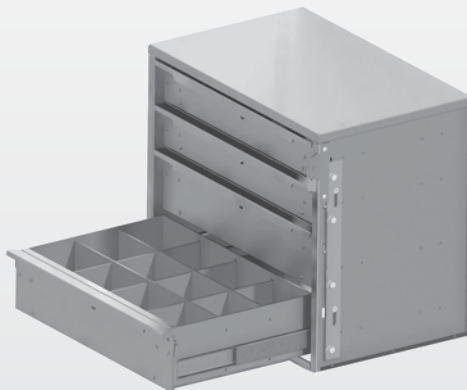
250-lb. weight capacity slides

Dividers for fastener or tool organization saves time and labor

Options

Locking or non-locking

Adjustable dividers or no dividers

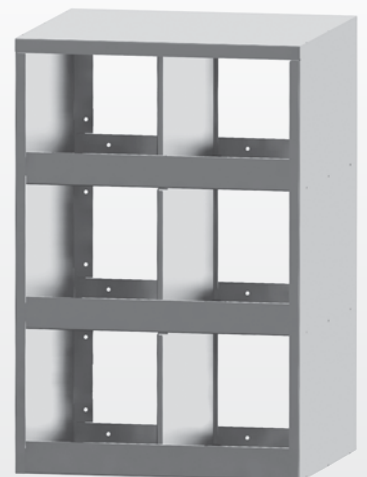
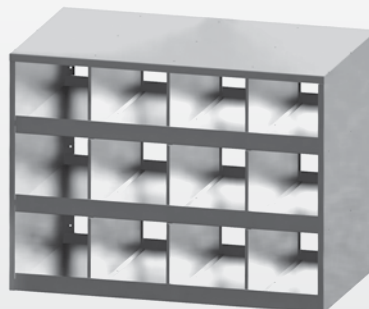


Bin Units

Height	24" or 36"
Width	24", 36", 42" or 48"
Depth	18" or 24"

Features

12" x 12" compartments with lip to hold contents in



Quality parts, by design.

Robust aluminum construction provides exceptional durability from a rust-free, lightweight alternative to steel.

Hardwood Worktable Units

Height	36", 48", 60", 72" or 96"
Depth	18" or 25"

Features

1.5" thick hardwood worktable

Countertop can be secured to top surface of drawer units

Options

Table legs

Table leg/drawer units



Exterior Underbody Drawer Units

Height	14" with 8" tall drawer or 18" with 12" tall drawer
Width	24", 30" or 36"
Depth	18" or 24"

Features

250-lb. weight capacity

Smooth-rolling slides

Sealed drawer to keep contents clean and dry

Creates easy access external storage

Options

Locking paddle latch



Worktable & Underbody Drawers

Quality parts, by design.

The industry's highest quality and most trusted folding shelving system organizes cargo area for space optimization.

Fold-Up and Sprinter Shelving

Sprinter™ Shelving — Fold-Up

Depth | 18.5" upper shelf, 21" lower shelf

Available for 170" wheel base and 170" wheel base extended Sprinter vehicles.

Package includes mounting T-studs, brackets and fasteners.

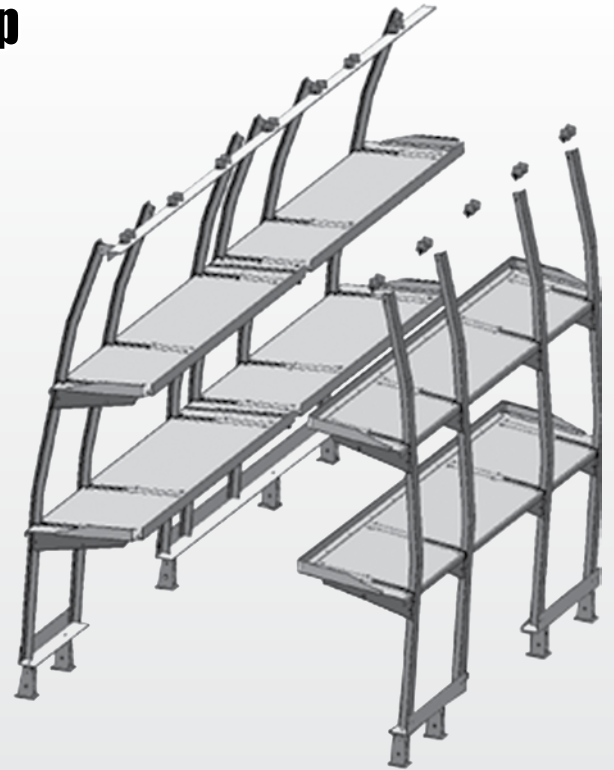
Features

Can be easily installed and ready to use in less than 3 hours

T-studs are bent to Sprinter body contour

Easy installation

Shelves are gas shock loaded to safely and securely fold up to the wall



Fold-Up Shelving For Walk-Ins

Depth | 24"
Length | 41", 50", 64", 74", 94", 96", 104" or 120"

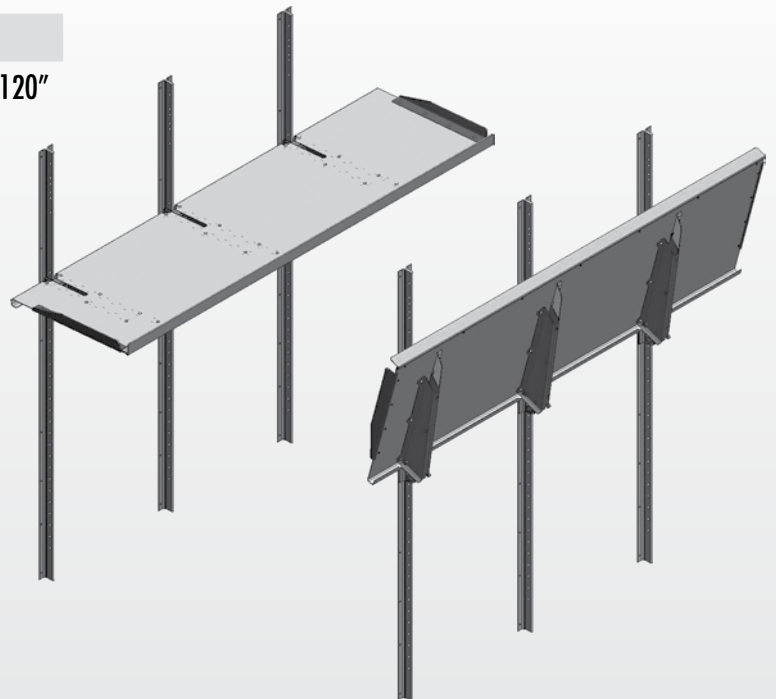
Features

Easily fastens to cargo area T-stud (sold separately)

Rugged aluminum construction

T-studs and fasteners available

Shelves are gas shock loaded to safely and securely fold up to the wall



Quality parts, by design.

Removable E-Track Shelving

Depth	20"
Length	48"



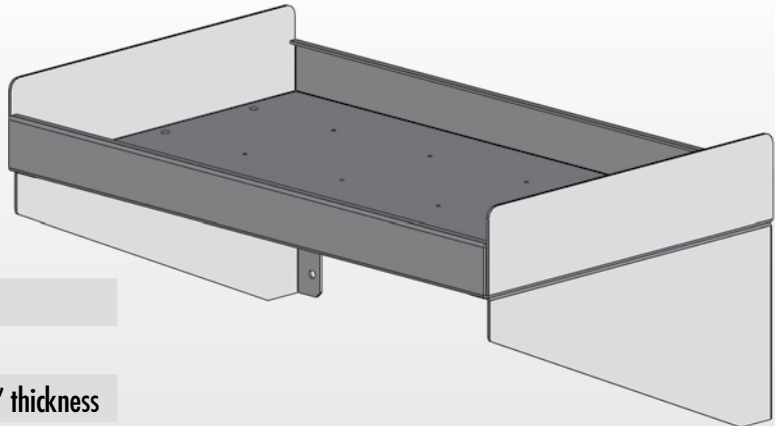
Features

- Quickly locks into place on E-track
- Easily removable for storage when not in use
- Load capacity 40 lbs. per linear foot
- Robust, lightweight aluminum construction – .100" thickness



Stationary Shelving

Depth	16", 18" or 24"
Length	24", 36", 48", 60", 72" or 84"

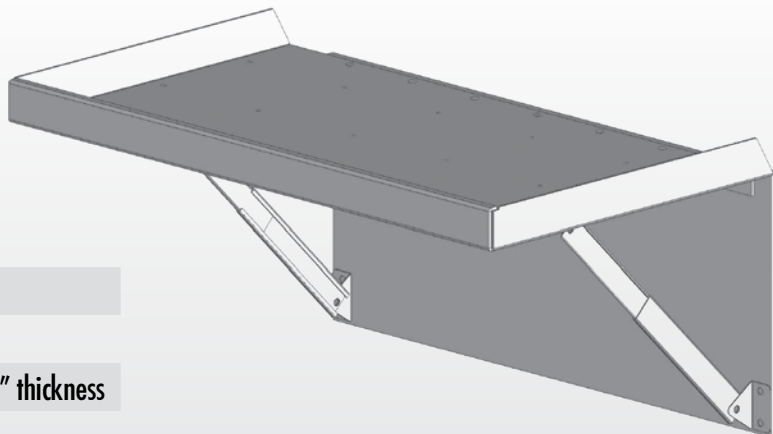


Features

- Will attach to sidewall extrusions
- Load capacity 80 lbs. per ft.
- Heavy duty, lightweight aluminum construction – .125" thickness

Fold-Down Shelving

Depth	16", 18" or 24"
Length	24", 36", 48", 60", 72" or 84"



Features

- Will attach to sidewall extrusions
- Load capacity 60 lbs. per ft.
- Heavy duty, lightweight aluminum construction – .125" thickness

Stationary & Fold-Down Shelving

Quality parts, by design.

Accessories

Cab Fan

Easy installation

Part # 17013005



Powered Cargo Area Roof Fan

Keeps cargo area comfortable by removing hot air while vehicle is in motion or parked

Part # 07206133



Fluorescent Cargo Area Light

Ties into vehicle's 12V system

18" – Part # 16511844



LED Cargo Light

16" x 4" low-profile design

10 white LEDs

Die-cast aluminum housing

Requires 1" recess

Part # 16514716



Solid Aluminum Grab Handle

6" – Part # 08611358

12" – Part # 08700351

18" – Part # 08610684



Back-Up Camera System

Easy installation for safer vehicle operation

Includes 7" LCD color monitor, mounting hardware and wires

Part # 23002278SK

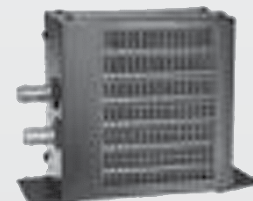


Auxiliary Cargo Area Heater

Ties into engine cooling system

65,000 BTU – Part # 17208044

15,000 BTU – Part # 17208038



Accessories

Quality parts, by design.



UTILIMASTER

Quality engineered shelving from Utilimaster for over 35 years.

Our shelving is uniquely designed to maximize cargo area use for optimal workspace efficiency.

On average, every 100 lbs. of cargo weight saved by using aluminum shelving, rather than steel, improves fuel efficiency by 1%.

Measurements Needed for Shelving

Having the following vehicle information on hand will expedite the quote and order process:

- Cargo area length, width and height
- Door pocket dimensions
- Wheel well dimensions and distance from bulkhead
- Rear door type and size

For prices, visit our website at:

parts.utilimaster.com



Or contact Utilimaster's Customer Service Team directly at:

Utilimaster Corporation
Aftermarket Parts
65528 State Road 19
Wakarusa, IN 46573-0585

Toll-Free: 800-237-7806
Phone: 574-862-3219
Fax: 574-862-7637
Email: parts@utilimaster.com



Utilimaster Corporation
65906 State Road 19
PO Box 585
Wakarusa, IN 46573

Presorted Standard
U.S. Postage
Paid
South Bend, IN
Permit # 484



Cargo area organization is the fastest way to save time and money. Shelving from Utilimaster reduces tool, material and cargo damage to eliminate wasted time and expenses.